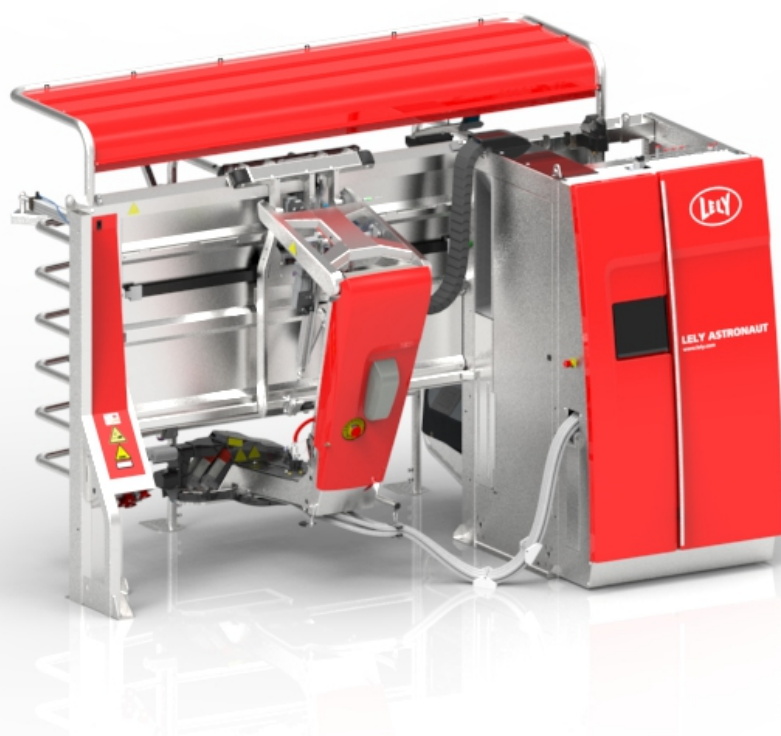


# Lely Astronaut A5 Vacuum System



## Parts list

5.1005.8567.0 A

English Original





INTENTIONALLY BLANK

# Preface

## Applicability

|               |                        |
|---------------|------------------------|
| Type number:  | As from serial number: |
| 5.1X05.00XX-X | 0003242094             |

### Spare Parts

When ordering spare parts it is important that you are aware of the type and serial number of your machine. Use only genuine LELY parts.

### Criticality

Criticality = Bulk, 0, 1, 2

- Bulk = Bulk item.
- 0 = Not critical.
- 1 = Not very critical.
- 2 = Critical.

### Explanation of Signs Used in the Parts List

|            |   |
|------------|---|
| [R] / [RH] | By RH or LH version the position of the part is meant, seen from the rear of the machine. |
| [L] / [LH] |   |
| [~]        | E.g.: LH version is not similar to the RH version, which is actually shown.               |
| [#]        | Not available seperately.   |



INTENTIONALLY BLANK

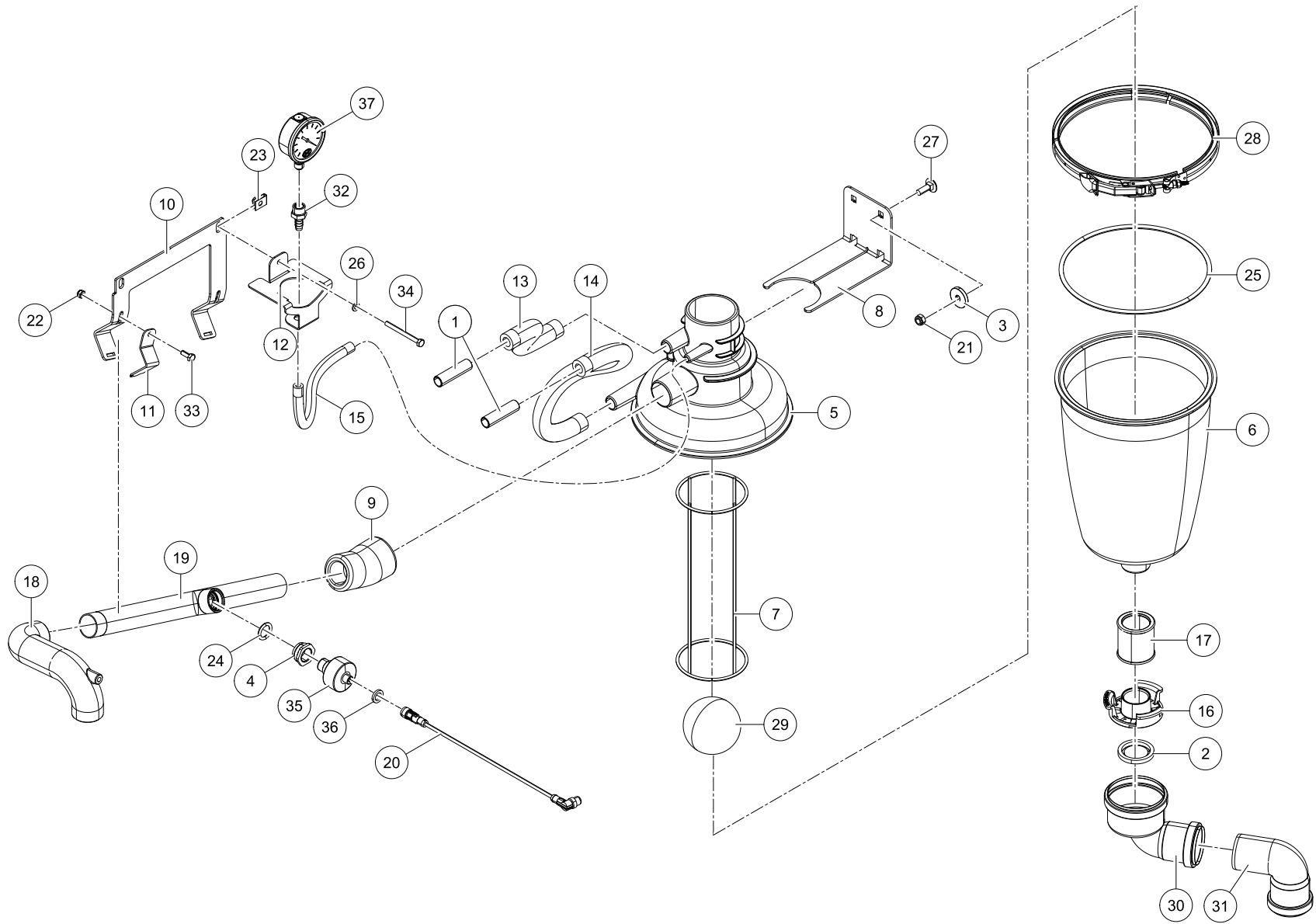


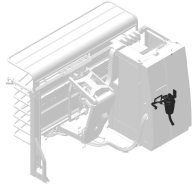
# Table of Contents

|          |                              |          |
|----------|------------------------------|----------|
| <b>A</b> | <b>Vacuum</b> .....          | <b>7</b> |
|          | A-1 Sanitary Trap .....      | 7        |
|          | A-2 Vacuum Supply Pipe ..... | 9        |



INTENTIONALLY BLANK





Astronaut A5

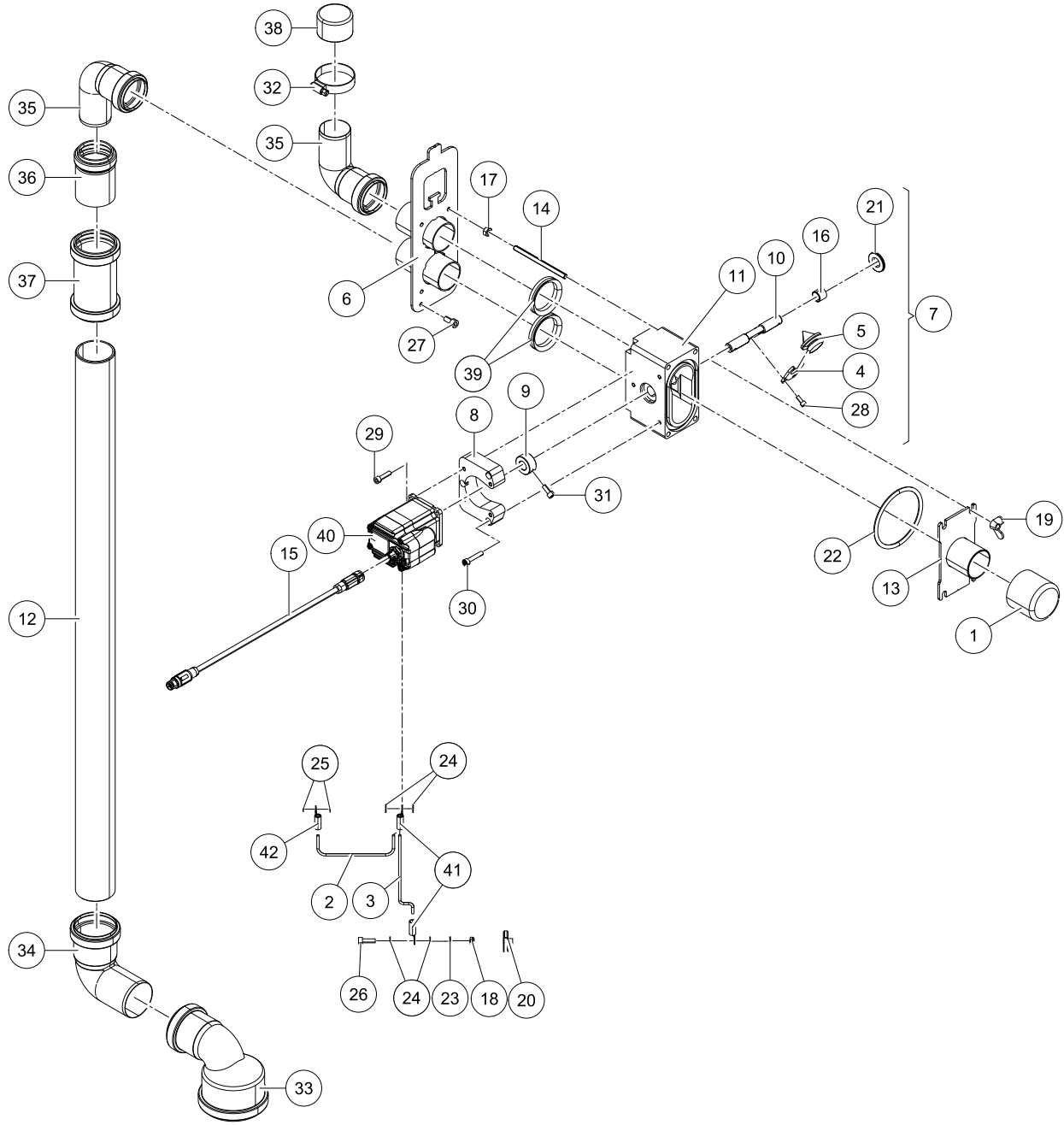
Vacuum  
System

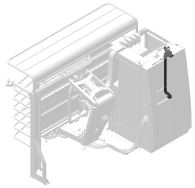
5.1X05.00XX-X

0003242094

| Ref. | Part No       | Qty.  | Description                      | Techn. info                       | Criticality | Remark |
|------|---------------|-------|----------------------------------|-----------------------------------|-------------|--------|
| 1    | 5.1001.6659.0 | 2     | Coupling piece                   |                                   | Bulk        |        |
| 2    | 5.1003.0373.0 | 1     | Valve                            |                                   | 2           |        |
| 3    | 5.1004.1286.0 | 1     | Ring                             |                                   |             |        |
| 4    | 5.1005.3009.0 | 1     | Ring                             |                                   | 1           |        |
| 5    | 5.1005.3040.0 | 1     | Manifold                         |                                   | 2           |        |
| 6    | 5.1005.3041.0 | 1     | Buffer                           |                                   | 2           |        |
| 7    | 5.1005.3098.0 | 1     | Holder weld.                     |                                   | 1           |        |
| 8    | #####         | 1     | Not separately                   |                                   |             |        |
| 9    | 5.1005.3102.0 | 1     | Coupling piece                   |                                   | 1           |        |
| 10   | 5.1005.3134.0 | 1     | Plate                            |                                   | 1           |        |
| 11   | 5.1005.3135.0 | 2     | Plate                            |                                   |             |        |
| 12   | 5.1005.3139.0 | 1     | Plate                            |                                   |             |        |
| 13   | 9.1185.0013.3 | 1     | Tube                             | 14x25, L=260mm                    | Bulk        |        |
| 14   | 9.1185.0013.3 | 1     | Tube                             | 14x25, L=360mm                    | Bulk        |        |
| 15   | 9.1185.0089.2 | 1     | Tube                             | 7x14mm, L=290mm                   | Bulk        |        |
| 16   | 5.1005.3411.0 | 1     | Drain                            |                                   |             |        |
| 17   | 5.1005.3413.0 | 1     | Cuff                             |                                   | 1           |        |
| 18   | 5.1005.3483.0 | [R] 1 | Tube                             |                                   | 2           |        |
|      | 5.1105.3483.0 | [L] ~ | Tube                             |                                   | 2           |        |
| 19   | 5.1005.3484.0 | 1     | Tube                             |                                   | 2           |        |
| 20   | 6.2001.1019.0 | 1     | Cable                            |                                   | 2           |        |
| 21   | 9.1030.0020.4 | 1     | Nut                              | M8 DIN985 A2-2 s/s                | Bulk        |        |
| 22   | 9.1030.0021.5 | 2     | Nut                              | M6 DIN985 A2-2 s/s                | Bulk        |        |
| 23   | 9.1036.0039.3 | 2     | Speed nut                        | M6 s/s                            | Bulk        |        |
| 24   | 9.1043.0253.0 | 1     | O-ring                           | 37.47 x 5.33 SILICONE 60° SHORE A | 1           |        |
| 25   | 9.1043.0302.0 | 1     | O-ring 200 x 6 EPDM 70°<br>SHORE |                                   | 1           |        |
| 26   | 9.1048.0090.0 | 1     | Washer                           | A6,4 DIN125-A2 s/s                | Bulk        |        |
| 27   | 9.1058.0053.2 | 1     | Coach bolt                       | M8x25 DIN603 s/s                  |             |        |
| 28   | 9.1066.0110.0 | 1     | Clamp                            |                                   | 1           |        |
| 29   | 9.1073.0191.0 | 1     | Ball                             |                                   | 2           |        |
| 30   | 9.1073.0192.0 | 1     | Tube                             |                                   | 1           |        |
| 31   | 9.1073.0193.0 | 1     | Tube 50mm 90°                    |                                   | 1           |        |
| 32   | 9.1073.0199.0 | 1     | Fitting                          | Nylon Female Adapter              | 1           |        |
| 33   | 9.1113.0163.1 | 2     | Bolt                             | M6x16 DIN933-A2-2 s/s             | Bulk        |        |
| 34   | 9.1113.0561.0 | 2     | Bolt                             | M6x65 DIN931-A2-2 s/s             |             |        |
| 35   | 9.1183.0097.0 | 1     | Sensor ass.                      |                                   | 2           |        |
| 36   | #####         | 1     | Not separately                   |                                   |             |        |
| 37   | 9.1185.0052.0 | 1     | Vacuum gauge                     | 1/4"                              | 1           |        |







Astronaut A5

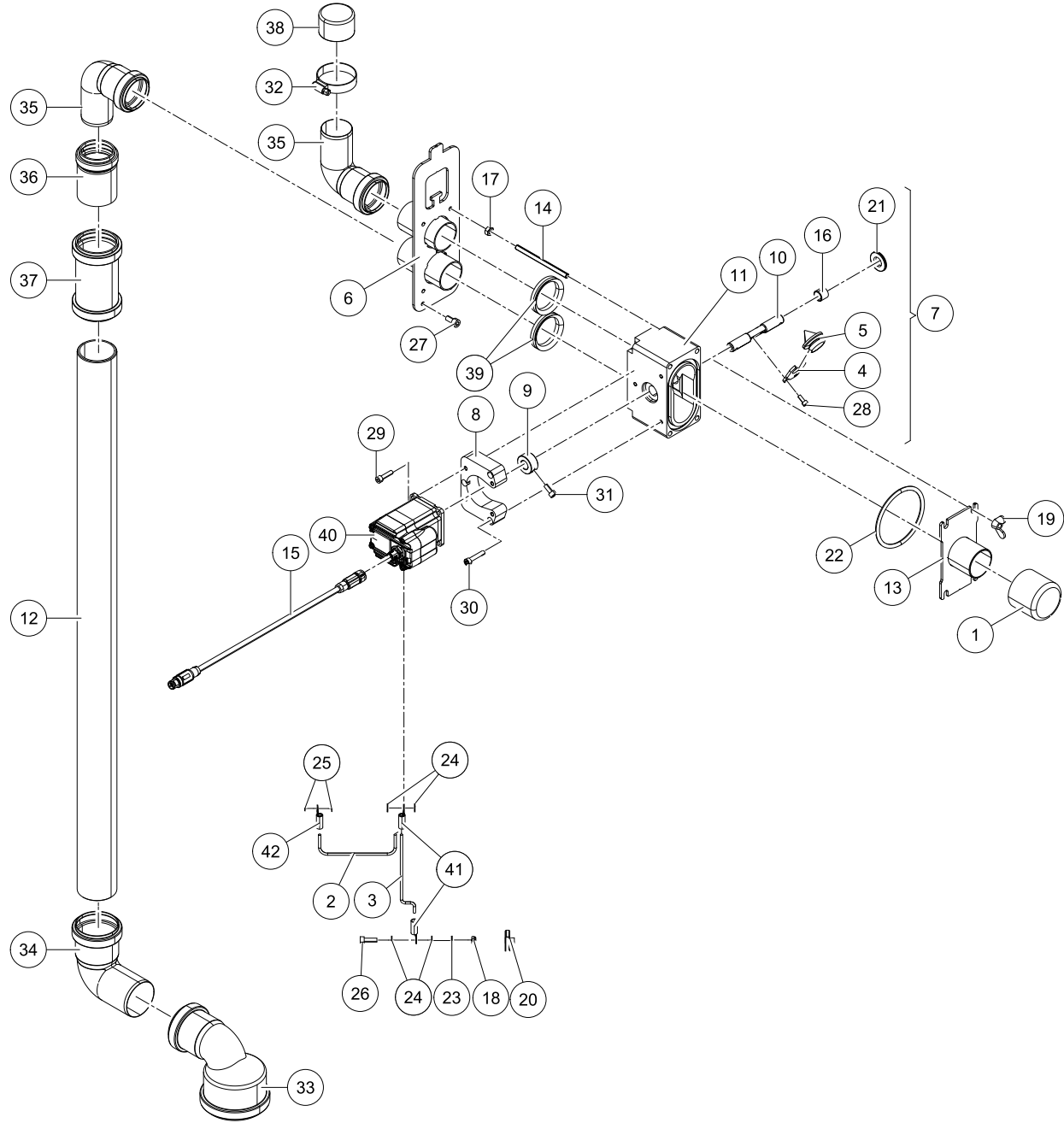
Vacuum  
System

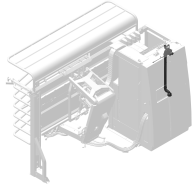
5.1X05.00XX-X

0003242094

| Ref. | Part No       | Qty. | Description               | Techn. info          | Criticality | Remark |
|------|---------------|------|---------------------------|----------------------|-------------|--------|
| 1    | 5.1004.0970.0 | 1    | Locking cap               |                      |             |        |
| 2    | 9.1186.0386.0 | 1    | Litze                     | 2.5mm, L=300mm       |             |        |
| 3    | 9.1186.0386.0 | 1    | Litze                     | 2.5mm, L=300mm       |             |        |
| 4    | 5.1004.5885.0 | 1    | Plate                     |                      |             |        |
| 5    | 5.1004.5886.0 | 1    | Seal                      |                      |             |        |
| 6    | 5.1005.3071.0 | 1    | Manifold weld.            |                      |             |        |
| 7    | 5.1005.3073.0 | 1    | Valve                     |                      | 2           |        |
| 8    | 5.1005.3077.0 | 1    | Plate                     |                      | 1           |        |
| 9    | 5.1005.3078.0 | 1    | Ring                      |                      | 1           |        |
| 10   | 5.1005.3079.0 | 1    | Shaft                     |                      | 1           |        |
| 11   | 5.1005.3080.0 | 1    | Housing                   |                      | 1           |        |
| 12   | #####         | 1    | Not separately            |                      |             |        |
| 13   | 5.1005.3195.0 | 1    | Manifold weld.pp          |                      |             |        |
| 14   | 5.1005.3198.0 | 4    | Stud                      |                      |             |        |
| 15   | 6.2001.1017.0 | 1    | Cable                     |                      | 2           |        |
| 16   | 9.1022.0123.0 | 2    | Bearing J260SM-1214-12    |                      | 1           |        |
| 17   | 9.1029.0026.4 | 4    | Nut                       | M6 DIN934 A2-2 s/s   | Bulk        |        |
| 18   | 9.1030.0035.5 | 1    | Nut                       | M5 DIN985 A2-2 s/s   | Bulk        |        |
| 19   | 9.1032.0008.4 | 4    | Wing-nut                  | M6                   | Bulk        |        |
| 20   | 9.1036.0066.0 | 1    | Speed nut                 |                      |             |        |
| 21   | 9.1042.0104.0 | 2    | Oil seal 12x 26x 3 SA     | A+P RADIAL SHAFT     | 1           |        |
| 22   | 9.1043.0301.0 | 1    | O-ring                    |                      | 1           |        |
| 23   | 9.1048.0086.3 | 1    | Washer                    | A5,3 DIN125-A2 s/s   | Bulk        |        |
| 24   | 9.1051.0010.1 | 4    | Serr.lock washer          | A5,1 DIN6798 s/s     | Bulk        |        |
| 25   | 9.1051.0015.6 | 2    | Serr.lock washer          |                      |             |        |
| 26   | 9.1057.0066.2 | 1    | S.h. bolt                 | M5x16 DIN912-A2 s/s  | Bulk        |        |
| 27   | 9.1057.0067.3 | 2    | S.h. bolt                 | M6x12 DIN912-A2 s/s  | Bulk        |        |
| 28   | 9.1057.0072.1 | 2    | S.h. bolt                 | M4x10 DIN912-A2 s/s  | Bulk        |        |
| 29   | 9.1057.0088.3 | 4    | S.h. bolt                 | M5x20 DIN912-A2 s/s  | Bulk        |        |
| 30   | 9.1057.0101.2 | 3    | S.h. bolt                 | M5x25 DIN912-A2 s/s  | Bulk        |        |
| 31   | 9.1057.0170.0 | 1    | S.h. bolt                 | M5x12 DIN912-A2s/s   | Bulk        |        |
| 32   | 9.1066.0023.6 | 1    | Hose clamp                | ø35-ø50 s/s          | Bulk        |        |
| 33   | 9.1073.0192.0 | 1    | Tube                      |                      | 1           |        |
| 34   | 9.1073.0193.0 | 1    | Tube 50mm 90°             |                      | 1           |        |
| 35   | 9.1073.0194.0 | 2    | Tube 40mm socket 90°      | 40mm socket 90degree | 1           |        |
| 36   | 9.1073.0195.0 | 1    | Tube reducer 50x40 socket | reducer 50x40 socket | 1           |        |

CONTINUED





Astronaut A5 Vacuum System 5.1X05.00XX-X 0003242094

| Ref. | Part No       | Qty. | Description         | Techn. info          | Criticality | Remark |
|------|---------------|------|---------------------|----------------------|-------------|--------|
| 37   | 9.1073.0196.0 | 1    | Tube 50mm 2x socket |                      | 1           |        |
| 38   | 9.1108.0152.0 | 1    | Cover               | 7.5x9.8x10.8         |             |        |
| 39   | 9.1137.0431.0 | 2    | Ring                |                      | 1           |        |
| 40   | 9.1184.0089.0 | 1    | Motor               | MDRIVE MCI23B-ELM-08 | 2           |        |
| 41   | #####         | 2    | Not separately      |                      |             |        |
| 42   | #####         | 1    | Not separately      |                      |             |        |

D000375-002

Vacuum Supply Pipe

A-2





**Lely Industries N.V.**

Cornelis van der Lelylaan 1

NL-3147 PB Maassluis

Tel +31 (0)88 - 12 28 221

Fax +31 (0)88 - 12 28 222

