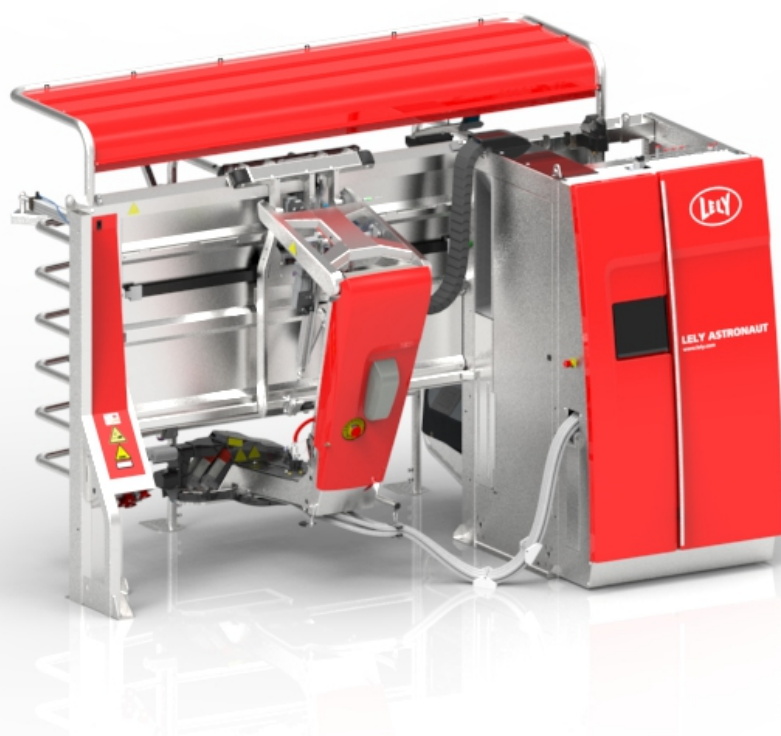


Lely Astronaut A5 Feed Unit



Parts list

5.1005.8566.0 E

English Original





INTENTIONALLY BLANK

Preface

Applicability

Type number:	As from serial number:
5.1X05.00XX-X	0003242094

Spare Parts

When ordering spare parts it is important that you are aware of the type and serial number of your machine. Use only genuine LELY parts.

Criticality

Criticality = Bulk, 0, 1, 2

- Bulk = Bulk item.
- 0 = Not critical.
- 1 = Not very critical.
- 2 = Critical.

Explanation of Signs Used in the Parts List

[R] / [RH]	By RH or LH version the position of the part is meant, seen from the rear of the machine.
[L] / [LH]	
[~]	E.g.: LH version is not similar to the RH version, which is actually shown.
[#]	Not available seperately.

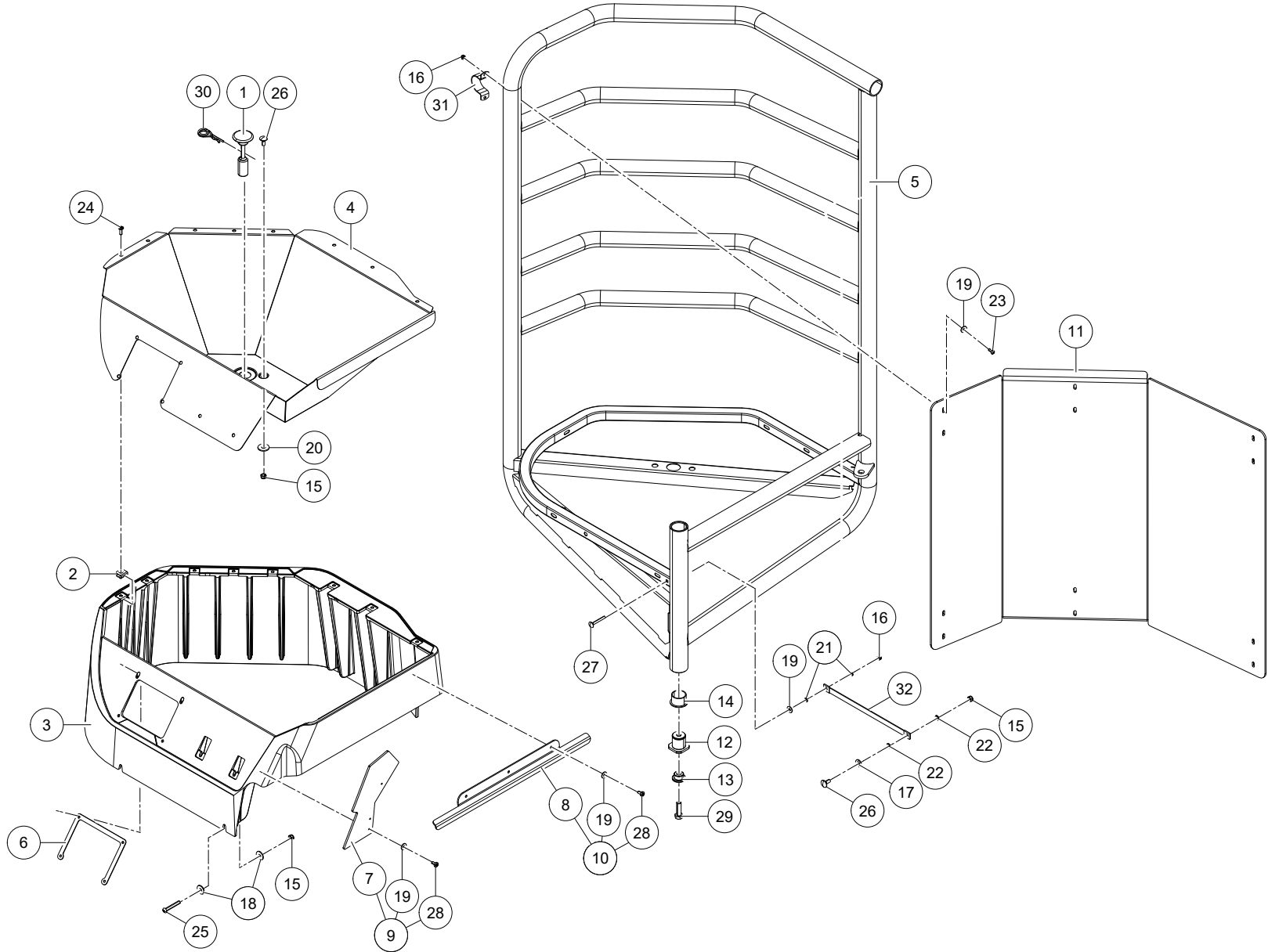


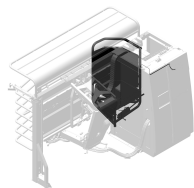
INTENTIONALLY BLANK



Table of Contents

A	Feed Bin	6
A-1	Feed Bin	6
A-2	Hydrolic Cylinder	8
A-3	Exit Gate Cylinder	10
B	Module Feed All Options	12
B-1	Feed Unit	12
B-2	Feed Pipe (Type A)	14
B-3	Feed Pipe (Type B)	16
B-4	Feed Dosing Motor	18
B-5	Titania (Optional)	20





Astronaut A5

Feed Unit

5.1X05.00XX-X

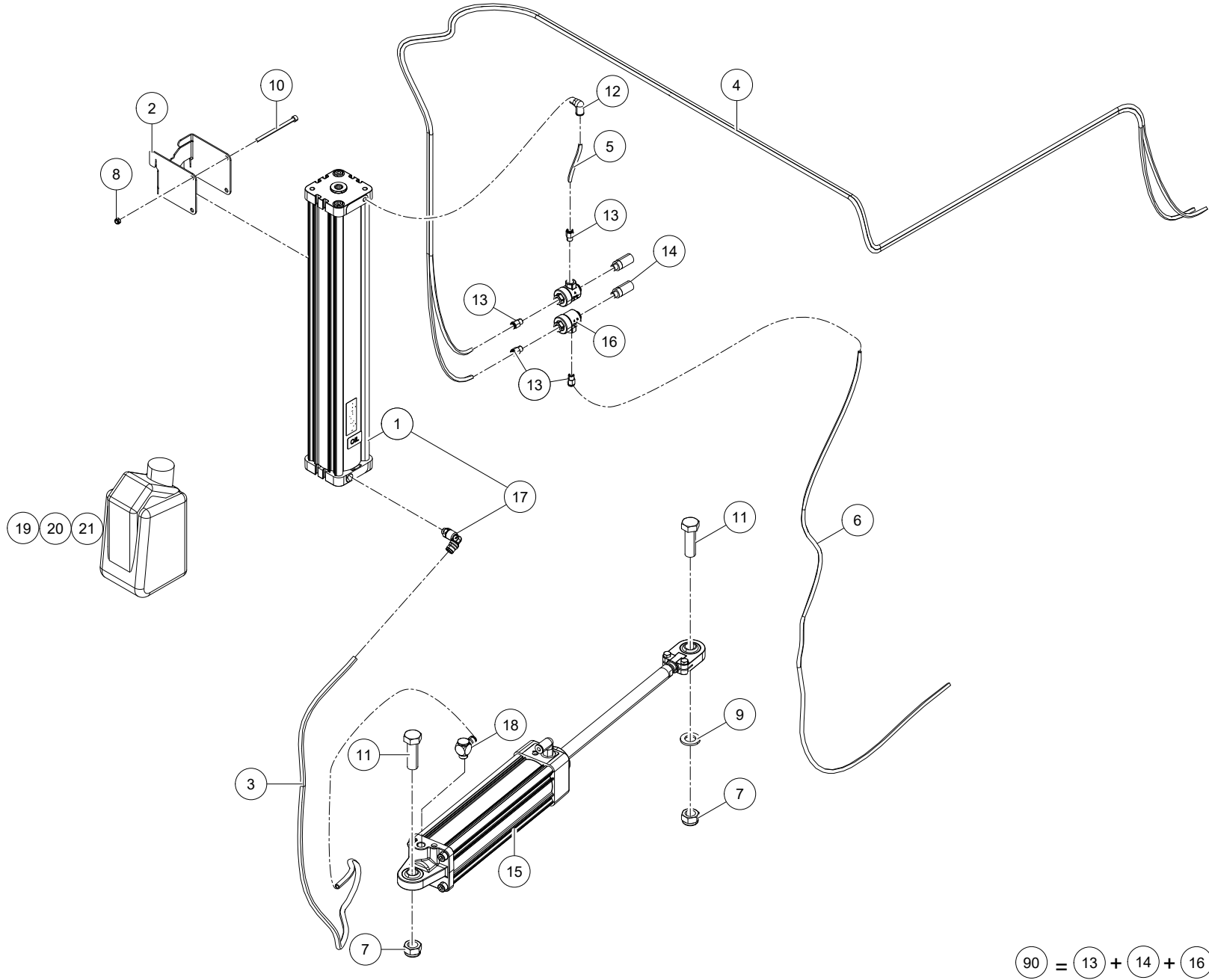
0003242094

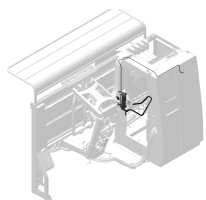
Ref.	Part No	Qty.	Description	Techn. info	Criticality	Remark
1	5.1004.2117.0	1	Plug			
2	5.1004.2898.0	10	Securing clip			
3	5.1004.5008.0	[R] 1	Feed bin		1	
	5.1104.5008.0	[L] ~	Feed bin			
4	5.1004.5377.0	[R] 1	Feed bin		1	
	5.1104.5377.0	[L] ~	Feed bin			
5	5.1004.5510.0	[R] 1	Gate weld.pp			
	5.1104.5510.0	[L] ~	Gate			
6	5.1004.5543.0	1	Bracket			
7	5.1004.6516.0	1	Plate			
8	5.1004.6641.0	1	Plate			
9	5.1004.6644.0	1	Set feed bin seal			
10	5.1004.6923.0	1	Set			
11	5.1004.6935.0	1	Plate			
12	5.1005.2592.0	2	Shaft		1	
13	5.1005.2607.0	2	Ring		1	
14	9.1022.0079.1	2	Slide bearing	GFM-3539-26	1	
15	9.1030.0020.4	8	Nut	M8 DIN985 A2-2 s/s	Bulk	
16	9.1030.0021.5	13	Nut	M6 DIN985 A2-2 s/s	Bulk	
17	9.1048.0051.3	1	Washer	A10,5 DIN125-A2 s/s	Bulk	
18	9.1048.0052.4	10	Washer	A8,4 DIN9021-A2 s/s	Bulk	
19	9.1048.0095.5	19	Washer	A6,4 DIN9021-A2 s/s	Bulk	
20	9.1048.0104.0	2	Washer	A10,5 DIN9021-A2 s/s	Bulk	
21	9.1051.0006.4	2	Serr.lock washer	A6,4 DIN6798 s/s	Bulk	
22	9.1051.0007.5	2	Serr.lock washer	A8,2 DIN6798 s/s	Bulk	
23	9.1057.0410.3	12	Button head screw	M6x16 ISO7380-A2 s/s	Bulk	
24	9.1057.0449.0	10	Screw	M6x20 ISO7380F A2-70 s/s		
25	9.1057.0458.0	5	Screw	M 8x 55 A2-70 s/s		
26	9.1058.0032.2	3	Coach bolt	M8x20 DIN603 s/s	Bulk	
27	9.1058.0105.0	1	Bolt	M 6x 50 A2-2 s/s		
28	9.1064.0186.0	6	Screw	6.3 X 16 A2 DIN 7981		
29	9.1113.0337.6	2	Bolt	M12x40 DIN933-A2-2 s/s		
30	9.1124.0015.0	1	Clip	DIN11024-double eye-4mm - stainless steel		
31	9.1137.1534.0	6	Clamp			
32	9.1186.0996.0	1	Ground stp		1	

D000379-001

Feed Bin

A-1





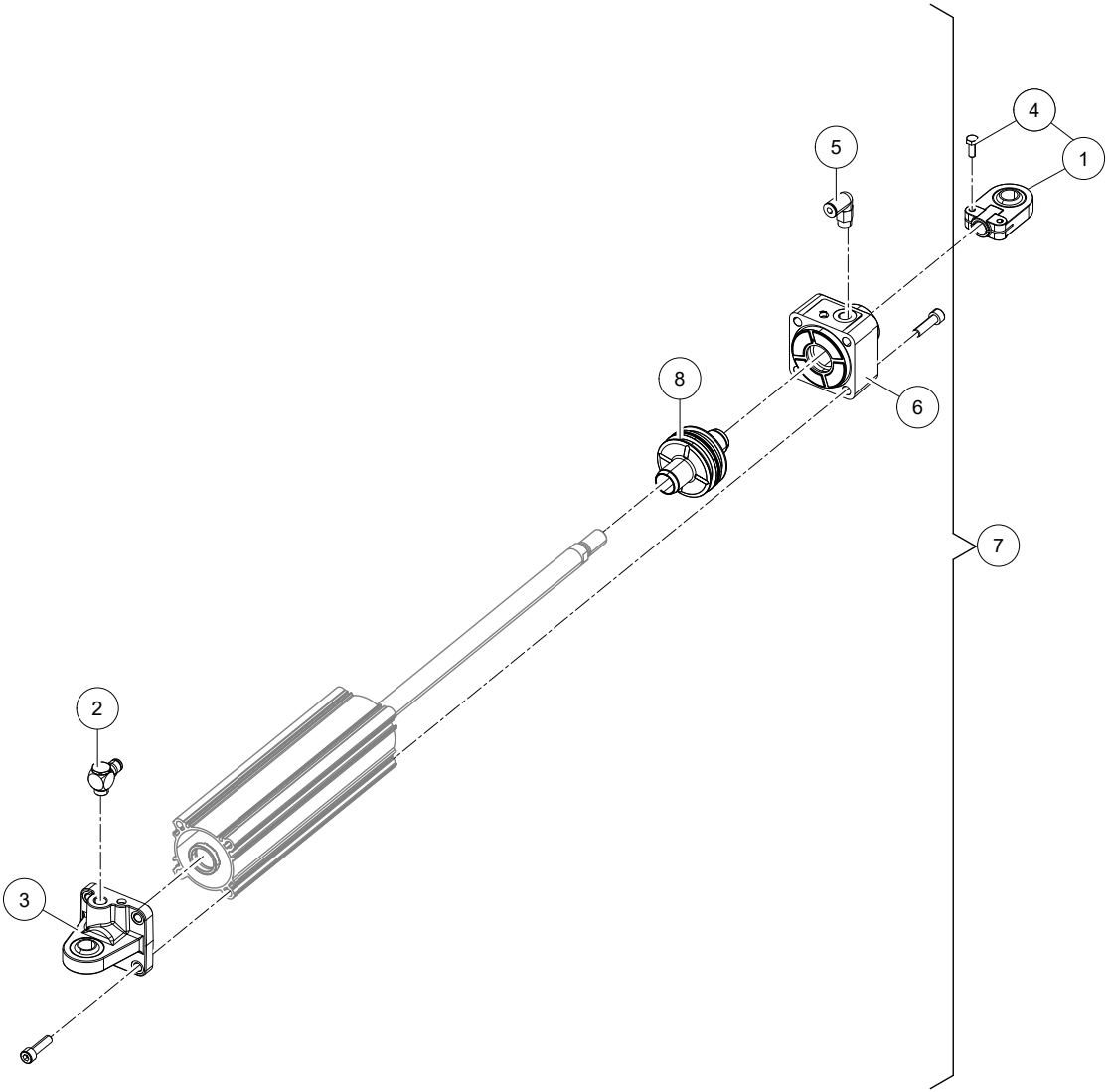
Astronaut A5

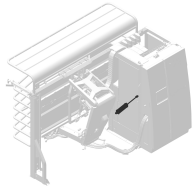
Feed Unit

5.1X05.00XX-X

0003242094

Ref.	Part No	Qty.	Description	Techn. info	Criticality	Remark
1	#####	1	Not separately			
2	#####	1	Not separately			
3	9.1138.0065.6	1	Hose	BLUE PA 8mm L=850		
4	#####	1	Hose	((9.1138.0063.4 PN hose BLACK 6mm PA), (9.1138.0064.5 PN hose BLUE 6mm))		
5	9.1138.0064.5	1	Tube	BLUE PA 6mm L=70		
6	9.1138.0063.4	1	Tube	BLACK PA 6mm L=1080		
7	9.1030.0034.4	2	Nut	M16 DIN985 A2-2 s/s		
8	9.1030.0035.5	2	Nut	M5 DIN985 A2-2 s/s		
9	9.1048.0085.2	1	Washer	A17 DIN125-A2 s/s		
10	9.1057.0131.4	2	S.h. bolt	M5x80 DIN912-A2-90 s/s		
11	9.1113.0560.0	2	Bolt	M16x50 DIN933-A2-2 s/s		
12	9.1138.0049.4	1	Plug-in coupling	1/8"x6mm ()		
13	9.1138.0923.0	4	Coupling straight	1/8"x6		
14	9.1138.0988.0	2	Silencer	G1/8"		
15	#####	1	Not separately			(see page 10)
16	9.1138.1215.0	2	Release valve G1/8".			
17	9.1138.1249.0	1	Coupling	EXTENDED STUD ELBOW G1/8"		
18	9.1138.1250.0	1	Coupling	BANJO G1/4"		
19	9.1171.0114.0	1	Oil	Lely bio synth.15 (1lt)		
20	5.1004.7499.0	1	Oil America/Pacific			
21	5.1004.7500.0	1	Oil Asia			
90	5.1005.3596.0	2	Quick air exhaust 6mm			

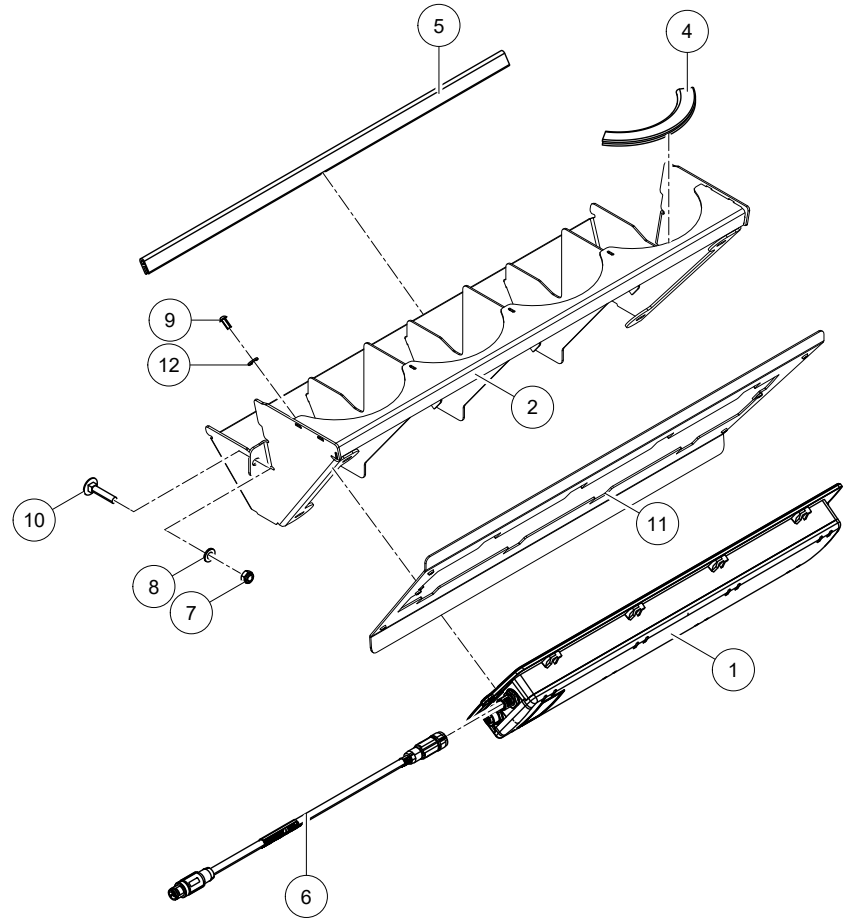
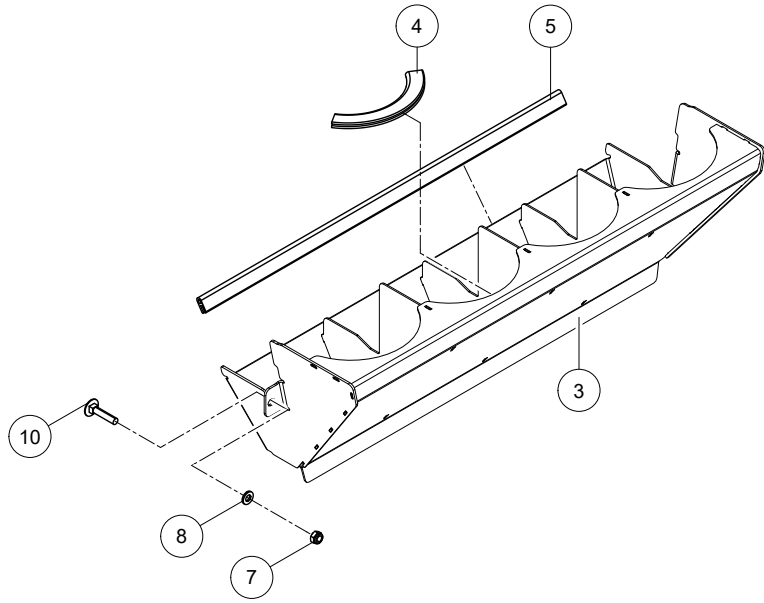


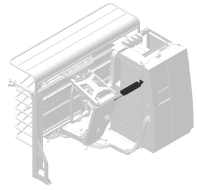


Astronaut A5 Feed Unit 5.1X05.00XX-X 0003242094

Ref.	Part No	Qty.	Description	Techn. info	Criticality	Remark
1	9.1038.0042.4	1	Ball head			
2	9.1138.1250.0	1	Coupling	BANJO G1/4"		
3	9.1038.0054.0	1	Bracket			
4	9.1113.0163.1	2	Bolt	M6x16 DIN933-A2-2 s/s		
5	9.1138.0059.0	1	Plug-in coupling	1/4"x6mm (_)		
6	9.1138.1030.0	1	Cover	Front end 63		
7	9.1138.1092.0	1	Cylinder	GATE PARKER 3579600 0222mm		
8	#####	1	Not separately			







Astronaut A5 Feed Unit 5.1X05.00XX-X 0003242094

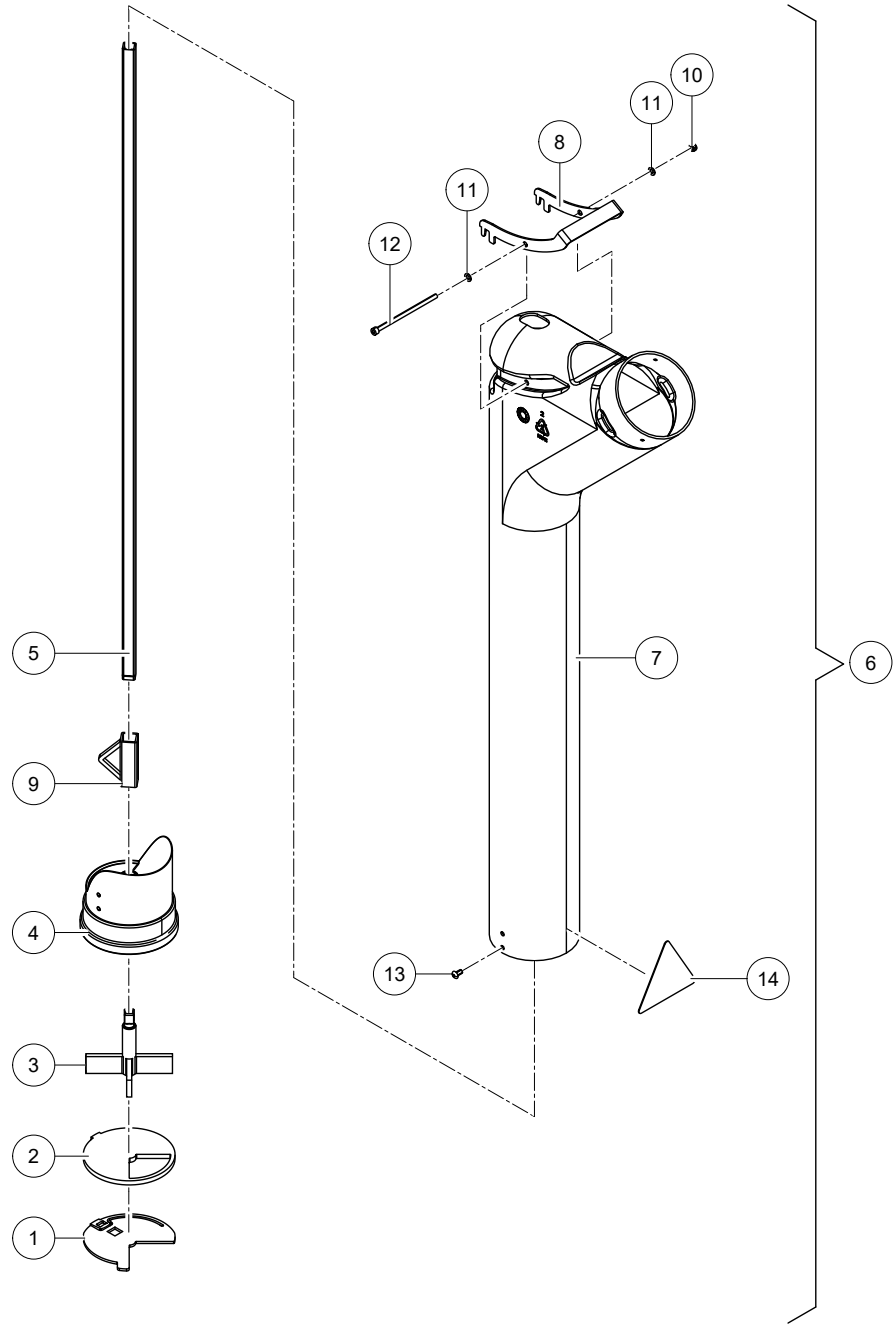
Ref.	Part No	Qty.	Description	Techn. info	Criticality	Remark
1	5.1004.5135.0	1	Sensor		1	
2	5.1004.7425.0	1	Bracket			
3	5.1004.7420.0	1	Bracket			
4	9.1073.0201.0	4	Profile	Duo hose PUNH 6x1 L=3350		
5	#####	2	Not separately			
6	6.2001.1037.0	1	Cable SAC-5P-MS/2,4-920/FS SCO		2	
7	9.1030.0021.5	2	Nut	M6 DIN985 A2-2 s/s	Bulk	
8	9.1048.0090.0	2	Washer	A6,4 DIN125-A2 s/s	Bulk	
9	9.1057.0435.0	2	Screw	M4x10 ISO7380-A2-70 s/s		
10	9.1058.0087.0	2	Coach bolt	M6x30 DIN603 A2-70 s/s		
11	5.1004.7422.0	1	Plate			
12	9.1121.0031.1	2	Spring washer	A 4 DIN127 s/s		

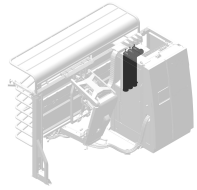
D000378-004

Feed Unit

B-1







Astronaut A5

Feed Unit

5.1X05.00XX-X

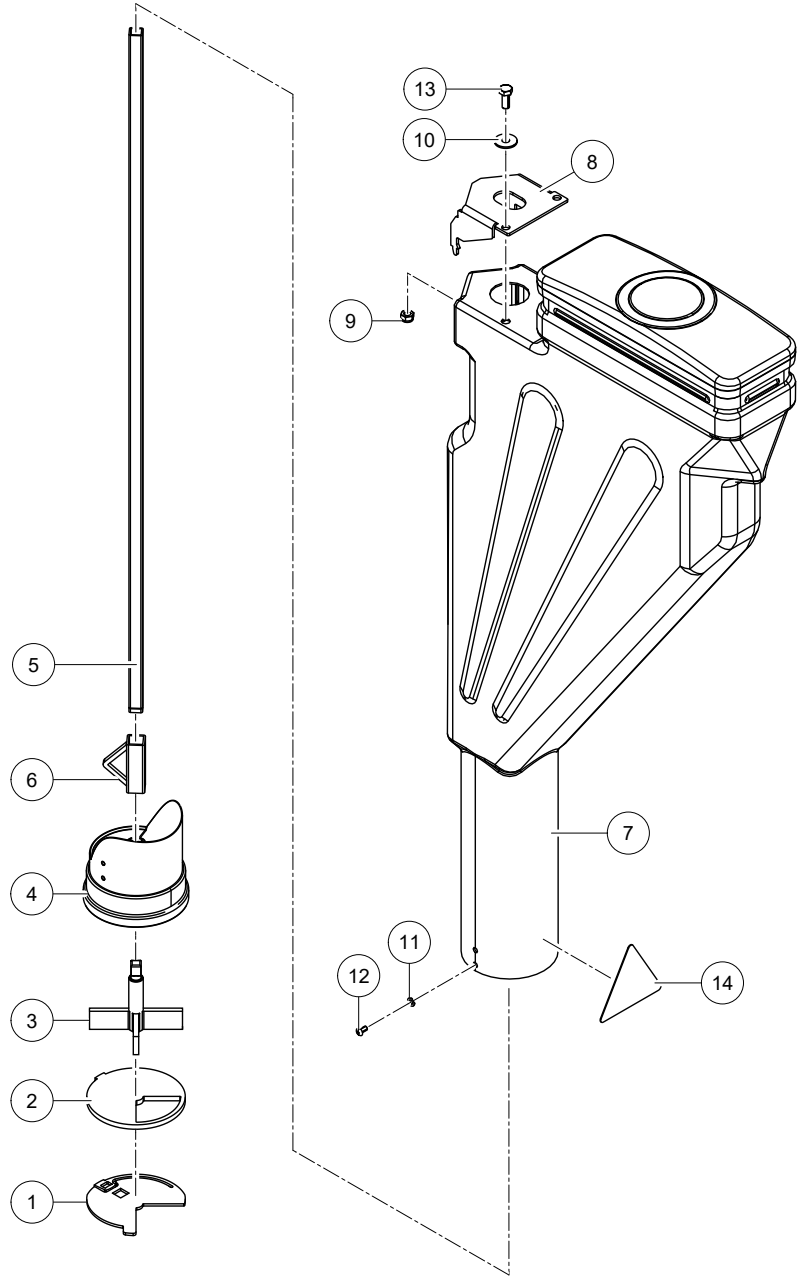
0003242094

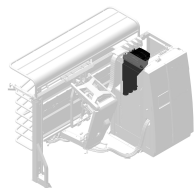
Ref.	Part No	Qty.	Description	Techn. info	Criticality	Remark
1	5.1003.0764.0	3	Plate		1	
2	5.1003.0767.0	3	Plate		1	
3	5.1003.0769.0	3	Rotor			
4	5.1003.0770.0	3	Housing		1	
5	5.1004.0081.0	3	Tube	15 x 1.5	1	
6	5.1004.1619.0	3	Feed dosing unit			
7	5.1004.1620.0	3	Buffer			
8	5.1004.1621.0	3	Plate			
9	5.1004.6655.0	3	Mixer		1	
10	9.1030.0035.5	3	Nut	M5 DIN985 A2-2 s/s	Bulk	
11	9.1048.0086.3	6	Washer	A5,3 DIN125-A2 s/s	Bulk	
12	9.1057.0190.0	3	Screw	M 5x100 DIN912 A2-s/s		
13	9.1057.0418.4	12	Button head screw	M5x10 ISO7380-1 A2 s/s		
14	9.1170.0720.4	3	Decal	"Watch out, turning"		

D000378-003

Feed Pipe (Type A)

B-2

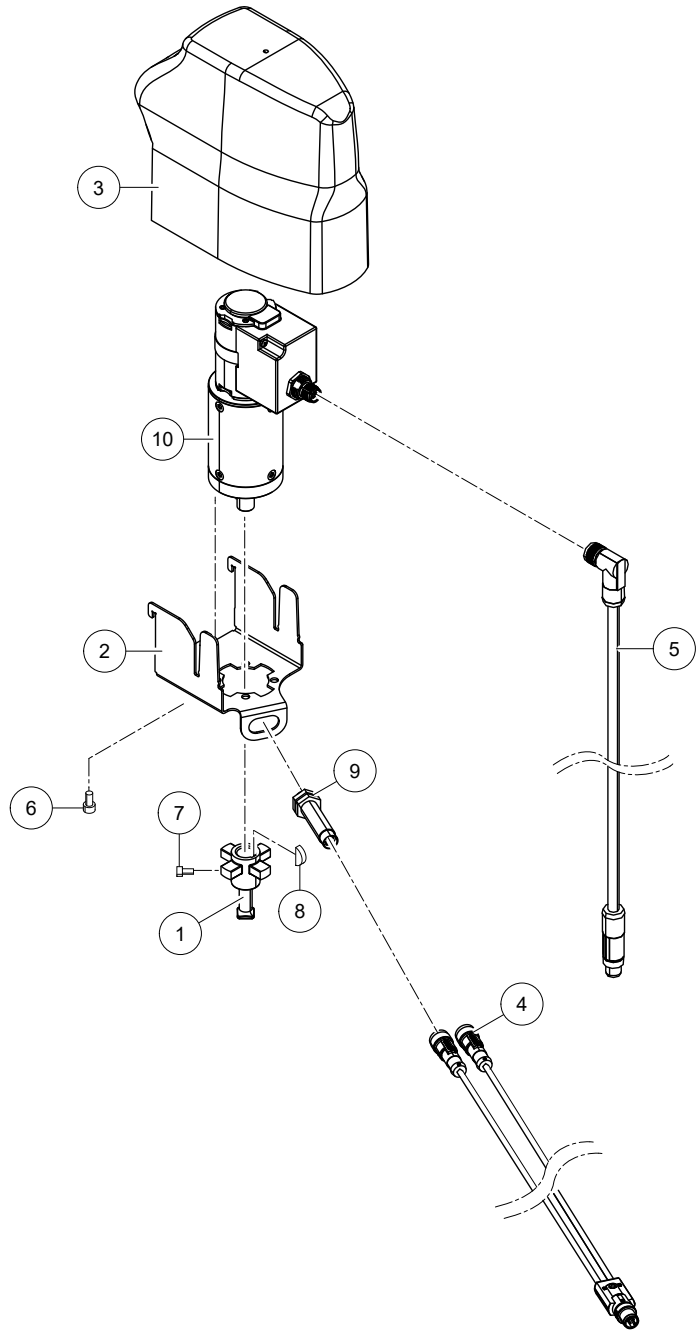


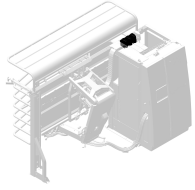


Astronaut A5 Feed Unit 5.1X05.00XX-X 0003242094

Ref.	Part No	Qty.	Description	Techn. info	Criticality	Remark
1	5.1003.0764.0	3	Plate		1	
2	5.1003.0767.0	3	Plate		1	
3	5.1003.0769.0	3	Rotor			
4	5.1003.0770.0	3	Housing		1	
5	5.1004.0081.0	3	Tube	15 x 1.5	1	
6	5.1004.6655.0	3	Mixer		1	
7	5.2308.0815.0	3	Buffer	short		
8	5.2308.0835.0	3	Bracket			
9	9.1030.0020.4	6	Nut	M8 DIN985 A2-2 s/s	Bulk	
10	9.1048.0052.4	6	Washer	A8,4 DIN9021-A2 s/s	Bulk	
11	9.1048.0086.3	12	Washer	A5,3 DIN125-A2 s/s	Bulk	
12	9.1057.0418.4	12	Button head screw	M5x10 ISO7380-1 A2 s/s		
13	9.1113.0174.5	6	Bolt	M8x20 DIN933-A2-2 s/s	Bulk	
14	9.1170.0720.4	3	Decal	"Watch out, turning"		







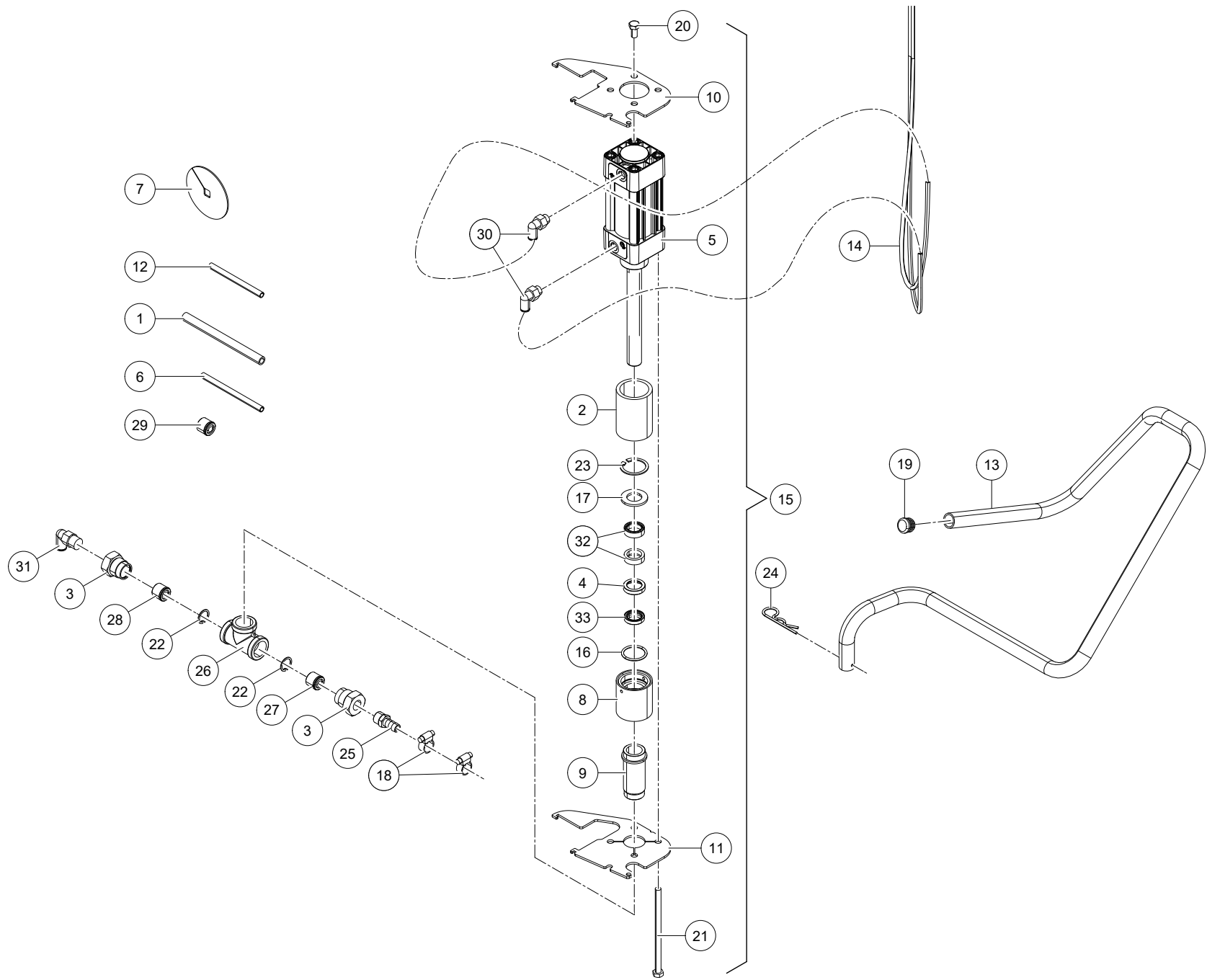
Astronaut A5

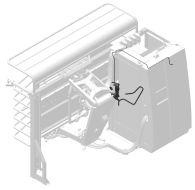
Feed Unit

5.1X05.00XX-X

0003242094

Ref.	Part No	Qty.	Description	Techn. info	Criticality	Remark
1	5.1004.0462.0	3	Shaft			
2	5.1005.3187.0	3	Support			
3	5.1005.3204.0	3	Cover			
4	6.2001.1012.0	1	Cable			
5	6.2001.1016.0	3	Cable			
6	9.1057.0147.6	12	S.h. bolt	M5x8 DIN912 s/s		
7	9.1057.0059.0	3	Screw	M4x8 A2 s/s		
8	9.1071.0080.0	3	Filling key	4 x 6.5 DIN 6888 - C45		
9	9.1183.0066.0	3	Sensor with M12 connector			
10	9.1184.0087.0	3	Motor	BGE3004A		





Astronaut A5

Feed Unit

5.1X05.00XX-X

0003242094

Ref.	Part No	Qty.	Description	Techn. info	Criticality	Remark
1	#####	1	Not separately			
2	5.1002.5806.0	1	Spacer bushing			
3	5.1002.5808.0	2	Adapter ring			
4	5.1002.5809.0	1	Scraper ring support			
5	5.1002.5830.0	1	Cylinder			
6	5.1002.6791.0	1	Suction tube	L=60mm	1	
7	5.1003.0596.0	1	Chemistry Label	"GLYCOL"		
8	5.1003.1064.0	1	Packing support			
9	5.1003.1066.0	1	Tube			
10	5.1004.1022.0	1	Bracket			
11	5.1004.2011.0	1	Bracket			
12	9.1138.0067.1	1	Feed tube		Bulk	
13	5.1005.3375.0	[R] 1	Tube			
	5.1105.3375.0	[L] ~	Tube			
14	#####	1	Hose	((9.1138.0063.4 PN hose BLACK 6mm PA), (9.1138.0064.5 PN hose BLUE 6mm))		
15	5.1005.3502.0	[R] 1	Titania ass.			
	5.1105.3502.0	[L] ~	Titania ass			
16	9.1043.0286.0	1	O-ring	29.5 x 3 NBR 70° SHORE		
17	9.1048.0071.2	1	Washer	A21 DIN125-A2 s/s	Bulk	
18	9.1066.0018.1	2	Hose clamp	Ø8-Ø16 s/s	Bulk	
19	9.1108.0133.5	1	Locking cap			
20	9.1113.0290.2	4	Bolt	M8x16 DIN933-A2-2 s/s	Bulk	
21	9.1113.0351.6	4	Bolt	M8x140 DIN931-A2-2 s/s	Bulk	
22	9.1120.0036.0	2	Retaining ring	20x1,00 DIN472 s/s	1	
23	9.1120.0037.1	1	Retaining ring	37x1,50 DIN472 s/s	1	
24	9.1124.0010.5	1	Locking spring		Bulk	
25	9.1129.0043.5	1	Tailpiece			
26	9.1129.0063.4	1	T-piece			
27	9.1137.0836.6	1	Non-return valve		1	
28	9.1137.0841.4	1	Non-return valve		1	
29	9.1137.0842.5	1	Non-return valve		1	
30	9.1138.0017.0	2	Plug-in coupling	1/4"x6mm (┘)	Bulk	
31	9.1138.0198.6	1	Plug-in coupling	3/8"x8mm (┘)	Bulk	
32	9.1180.0696.5	2	Grooved sleeve			
33	9.1180.0698.0	1	Dirt scraper			



INTENTIONALLY BLANK

Lely Industries N.V.

Cornelis van der Lelylaan 1

NL-3147 PB Maassluis

Tel +31 (0)88 - 12 28 221

Fax +31 (0)88 - 12 28 222

