

# Lely Astronaut

## Central Unit

## Water Supply Unit



## Parts list

5.1005.8564.0 B

English Original





INTENTIONALLY BLANK

# Preface

## Applicability

Type number:	As from serial number:
5.1004.0602-2XX	0003242507
5.1005.2XXX-XXX	0003242507

## Spare Parts

When ordering spare parts it is important that you are aware of the type and serial number of your machine. Use only genuine LELY parts.

## Criticality

Criticality = Bulk, 0, 1, 2

- Bulk = Bulk item.
- 0 = Not critical.
- 1 = Not very critical.
- 2 = Critical.

## Explanation of Signs Used in the Parts List

[R] / [RH]	By RH or LH version the position of the part is meant, seen from the rear of the machine.
[L] / [LH]	
[~]	E.g.: LH version is not similar to the RH version, which is actually shown.
[#]	Not available seperately.



INTENTIONALLY BLANK

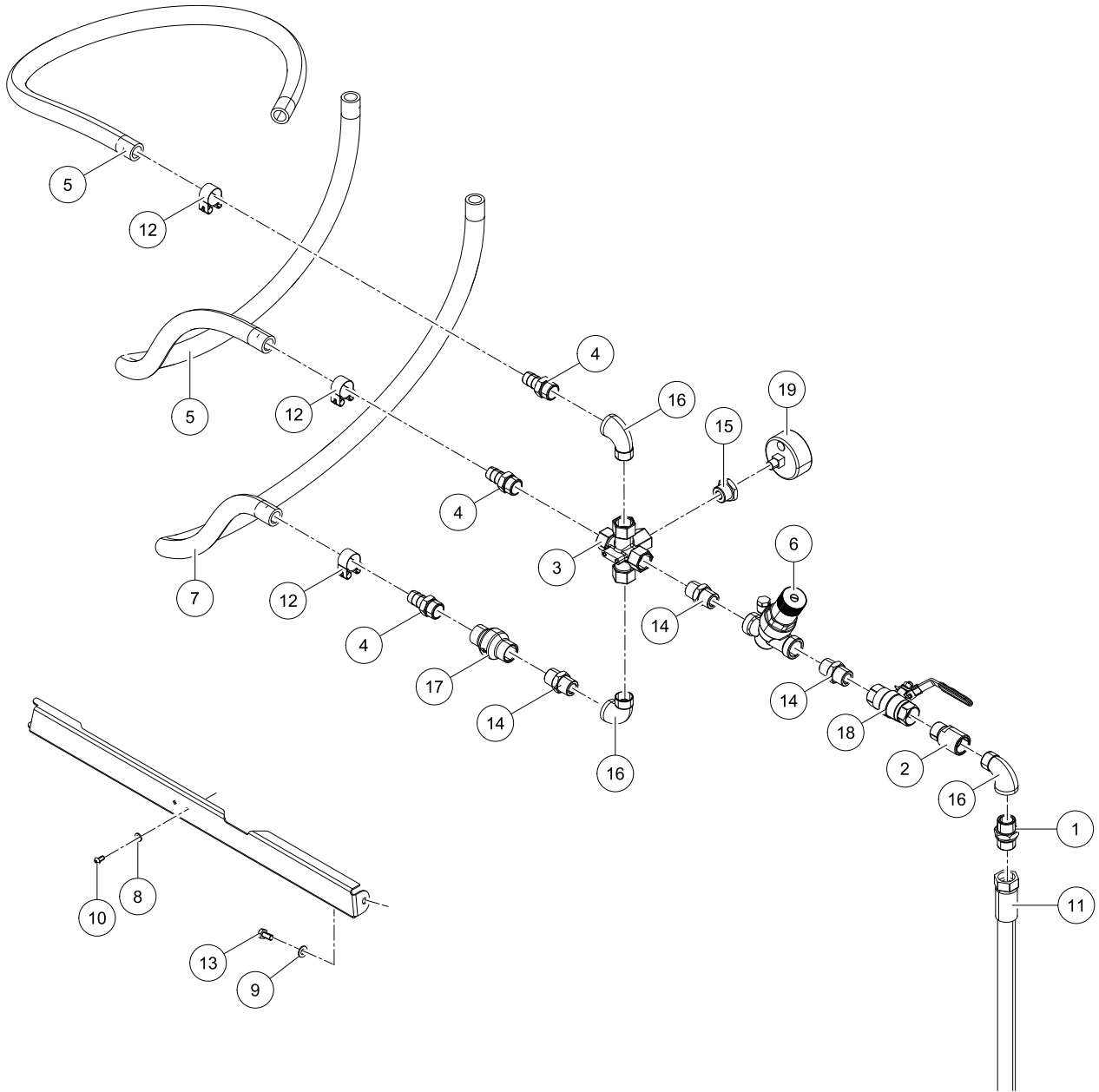


## Table of Contents

<b>A</b>	<b>Water Supply Unit</b>	<b>7</b>
A-1	Water Supply Unit (Standard)	7
A-2	Water Supply Unit (Hotfill EU)	9
A-3	Water Supply Unit (Hotfill USA)	11



INTENTIONALLY BLANK



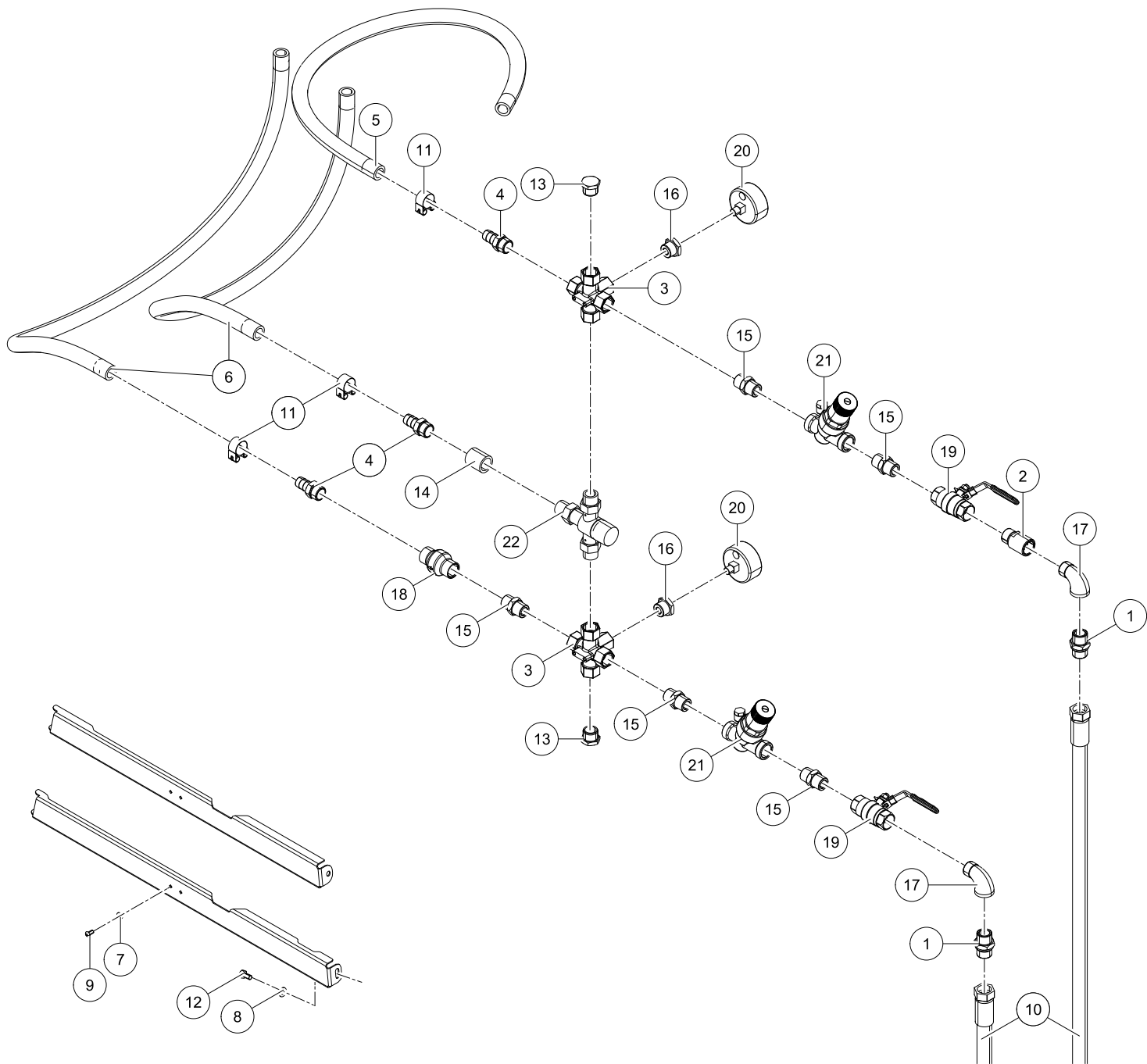


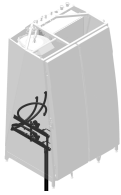
Astronaut A5

Water Supply 5.1004.0602-2XX 0003242507  
 Unit  
 Water Supply 5.1005.2XXX-XXX 0003242507  
 Unit

Ref.	Part No	Qty.	Description	Techn. info	Criticality	Remark
1	5.1004.1343.0	1	Red. nipple			
2	5.1004.1346.0	1	Red. nipple			
3	5.1004.1628.0	1	Manifold	"5 x G3/4"		
4	5.1004.1727.0	3	Pipe nipple		1	
5	9.1065.0092.5	1	Hose	BLACK 29X19 L=1200MM	1	
6	9.1189.0263.0	1	Reducer	HONEYWELL D05FT-3/4" E	1	
7	9.1065.0092.5	1	Hose	BLACK 28X19 L=1300MM	1	
8	9.1048.0046.5	2	Washer	A6,4 DIN125 A4 s/s		
9	9.1048.0050.2	1	Washer	A8,4 DIN125-A2 s/s	Bulk	
10	9.1057.0406.6	2	Button head screw	M6x12 ISO7380-1 A2-70 s/s	Bulk	
11	9.1065.0094.0	1	Tube	L=2300		
12	9.1066.0077.0	6	Hose clamp	Supra W4(27-29mm) power clamp	1	
13	9.1113.0290.2	1	Bolt	M8x16 DIN933-A2-2 s/s	Bulk	
14	9.1129.0087.0	3	Doubler nipple	3/4" AISI316		
15	9.1129.0092.5	1	Ring	3/4"-1/4"		
16	9.1129.0101.0	3	Gusset	3/4"		
17	9.1129.0114.0	1	Valve	3/4"	1	
18	9.1129.0212.0	1	Valve		1	
19	9.1138.1156.0	1	Manometer 1-6 BAR 1/4"		1	



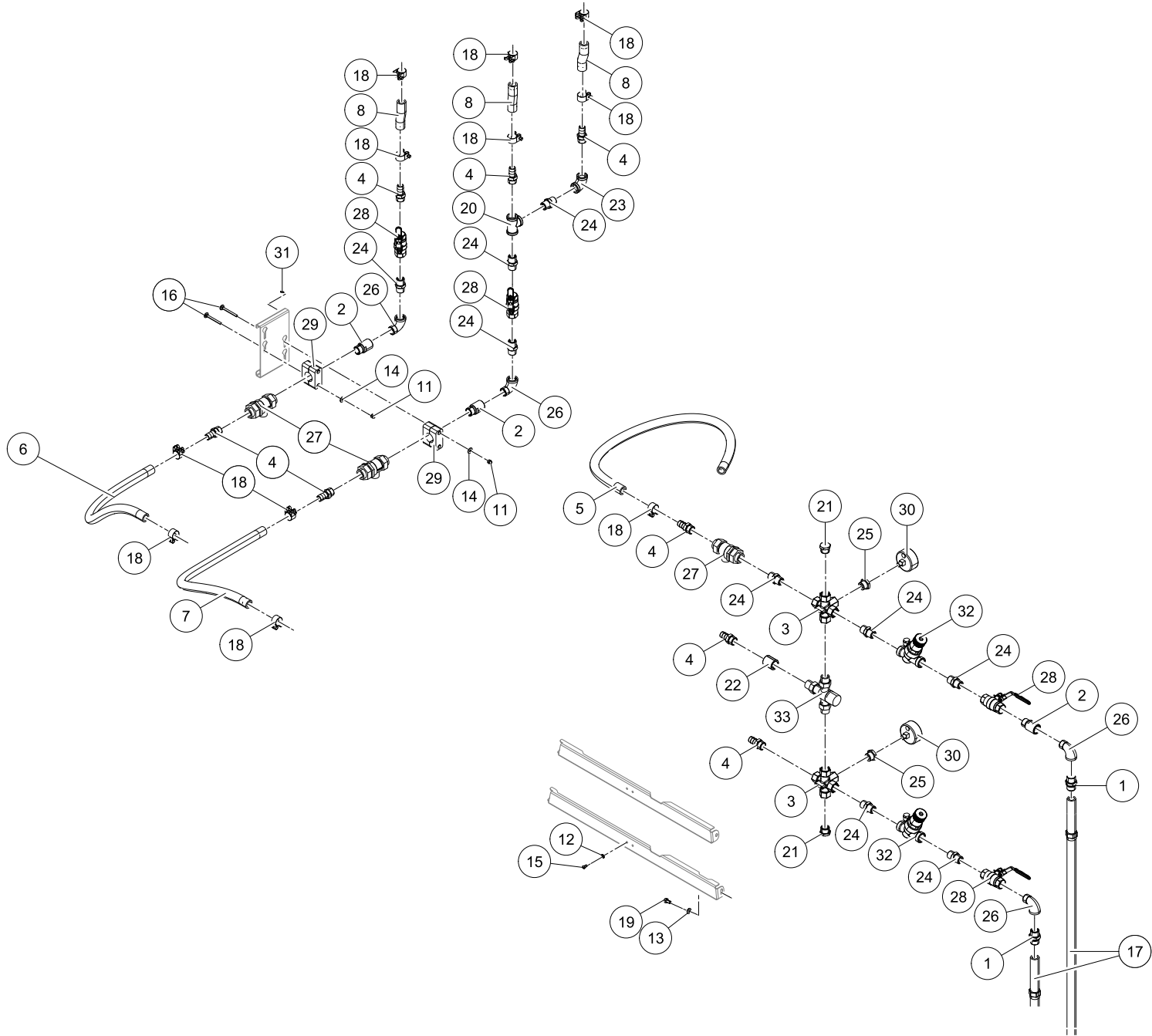


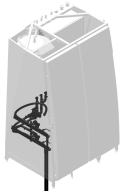


Astronaut A5 Water Supply Unit  
 5.1004.0602-2XX 0003242507  
 5.1005.2XXX-XXX 0003242507

Ref.	Part no.	Qty.	Description	Techn. info	Criticality	Remark
1	5.1004.1343.0	2	Red. nipple			
2	5.1004.1346.0	1	Red. nipple			
3	5.1004.1628.0	2	Manifold	"5 x G3/4"		
4	5.1004.1727.0	3	Pipe nipple		1	
5	9.1065.0092.5	2	Tube	Black EPDM 19x28 (120m), L=1200mm	1	
6	9.1065.0092.5	1	Tube	Black EPDM 19x28 (120m), L=1300mm	1	
7	9.1048.0046.5	4	Washer	A6,4 DIN125 A4 s/s		
8	9.1048.0050.2	2	Washer	A8,4 DIN125-A2 s/s	Bulk	
9	9.1057.0406.6	4	Button head screw	M6x12 ISO7380-1 A2-70 s/s	Bulk	
10	9.1065.0094.0	2	Tube	L=2300		
11	9.1066.0077.0	6	Hose clamp	Supra W4(27-29mm) power clamp	1	
12	9.1113.0290.2	2	Bolt	M8x16 DIN933-A2-2 s/s	Bulk	
13	9.1129.0078.5	2	Plug			
14	9.1129.0081.1	1	Coupling	BSP 3/4" AISI316 L=36	1	
15	9.1129.0087.0	5	Doubler nipple	3/4" AISI316		
16	9.1129.0092.5	2	Ring	3/4"-1/4"		
17	9.1129.0101.0	2	Gusset	3/4"		
18	9.1129.0114.0	1	Valve	3/4"	1	
19	9.1129.0212.0	2	Valve		1	
20	9.1138.1156.0	2	Manometer 1-6 BAR 1/4"		1	
21	9.1189.0263.0	2	Reducer	HONEYWELL D05FT-3/4" E	1	
22	9.1189.0267.0	1	Valve	HONEYWELL THERMO. TM200-G3/4A		







Astronaut A5

Water Supply 5.1004.0602-2XX 0003242507  
 Unit  
 Water Supply 5.1005.2XXX-XXX 0003242507  
 Unit

Ref.	Part No	Qty.	Description	Techn. info	Criticality	Remark
1	5.1004.1343.0	2	Red. nipple			
2	5.1004.1346.0	3	Red. nipple			
3	5.1004.1628.0	2	Manifold	"5 x G3/4"		
4	5.1004.1727.0	8	Pipe nipple		1	
5	9.1065.0092.5	1	Hose	BLACK 29X19 L=1200MM	1	
6	9.1065.0092.5	1	Hose	BLACK 28X19 L=700MM	1	
7	9.1065.0092.5	1	Hose	BLACK 28X19 L=850MM	1	
8	9.1065.0092.5	1	Hose	BLACK 28X19 L=125MM	1	
9	9.1189.0263.0	2	Reducer	HONEYWELL D05FT-3/4" E	1	
10	9.1189.0267.0	1	Valve	HONEYWELL THERMO. TM200-G3/4A		
11	9.1036.0089.0	4	Cap nut			
12	9.1048.0046.5	4	Washer	A6,4 DIN125 A4 s/s		
13	9.1048.0050.2	2	Washer	A8,4 DIN125-A2 s/s	Bulk	
14	9.1048.0095.5	4	Washer	A6,4 DIN9021-A2 s/s	Bulk	
15	9.1057.0406.6	4	Button head screw	M6x12 ISO7380-1 A2-70 s/s	Bulk	
16	9.1058.0059.1	4	Coach bolt	M6x65 DIN603-A2 s/s		
17	9.1065.0094.0	2	Tube	L=2300		
18	9.1066.0077.0	12	Hose clamp	Supra W4(27-29mm) power clamp	1	
19	9.1113.0290.2	2	Bolt	M8x16 DIN933-A2-2 s/s	Bulk	
20	9.1129.0063.4	1	T-piece			
21	9.1129.0078.5	2	Plug			
22	9.1129.0081.1	2	Coupling	BSP 3/4" AISI316 L=36	1	
23	9.1129.0085.5	1	Gusset	3/4"	1	
24	9.1129.0087.0	9	Doubler nipple	3/4" AISI316		
25	9.1129.0092.5	2	Ring	3/4"-1/4"		
26	9.1129.0101.0	4	Gusset	3/4"		
27	9.1129.0207.0	3	Valve			
28	9.1129.0212.0	4	Valve		1	
29	9.1137.0972.2	2	Clamp. block (2 p.)			
30	9.1138.1156.0	2	Manometer 1-6 BAR 1/4"		1	
31	9.1152.0007.2	4	Blind rivet	4.0x8 s/s		

D000421-003

Water Supply Unit (Hotfill USA)

A-3



**Lely Industries N.V.**

Cornelis van der Lelylaan 1

NL-3147 PB Maassluis

Tel +31 (0)88 - 12 28 221

Fax +31 (0)88 - 12 28 222

